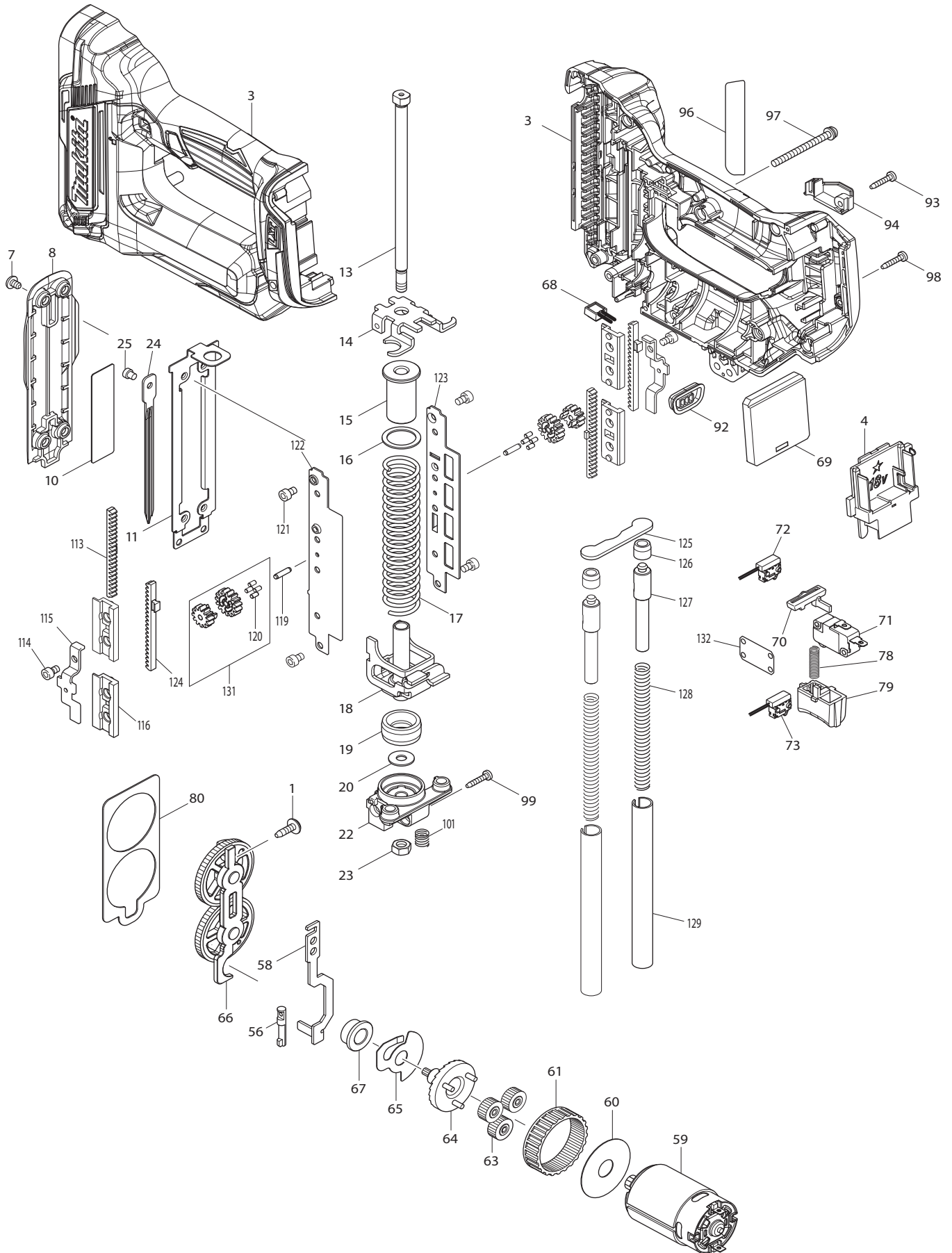
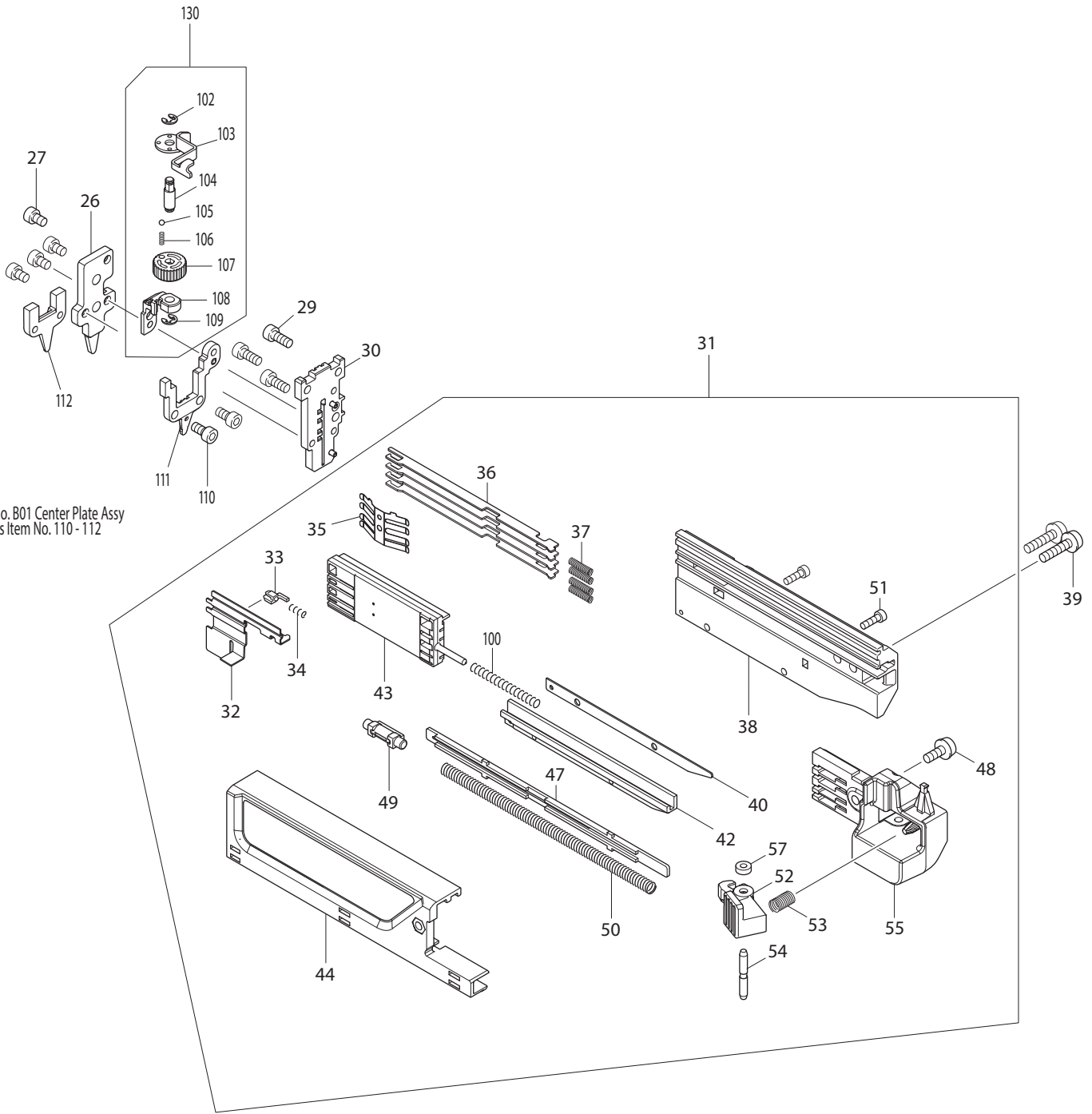




02 - 2017
DPT353Z
18V LXT Pin Nailer



*Item No. B01 Center Plate Assy
Includes Item No. 110 - 112



PARTS LIST

Item No	Type	Part No	Description	Qty	Unit
001		266901-4	TAPPING SCREW M4X14	1	PC.
003		183F93-9	HOUSING SET	1	SET
003	INC.	263005-3	RUBBER PIN 6	2	PC.
003	INC.	252126-6	HEX LOCKING NUT M4-7	2	PC.
003	INC.	931102-0	HEX NUT M4	1	PC.
004		643860-3	TERMINAL	1	PC.
007		915101-0	BINDING HEAD SCREW M4X6	4	PC.
008	2	459308-3	FRONT COVER	1	PC.
010	2	347528-0	UPPER PLATE	1	PC.
011		347140-6	RAIL	1	PC.
013		326903-3	GUIDE BOLT	1	PC.
014	1	347143-0	BOTTOM PLATE	1	PC.
014	2	347671-5	BOTTOM PLATE	1	PC.
015		457389-1	SPRING HOLDER	1	PC.
016		347148-0	SPRING BASE	1	PC.
017		232364-6	COMPRESSION SPRING 17	1	PC.
018		347141-4	HAMMER	1	PC.
019		424952-5	CUSHION	1	PC.
020		253804-1	FLAT WASHER 6	1	PC.
022	2	319981-0	HOLDER	1	PC.
023	2	252273-3	HEX NUT M6	1	PC.
024		345702-4	DRIVER	1	PC.
025	2	256882-0	FLAT FILLISTER HD PIN 4	1	PC.
026		144291-4	DRIVER GUIDE COVER COMPLETE	1	PC.
027		922102-1	HEX SOCKET HEAD BOLT M4X6	4	PC.
029	1	922112-8	* HEX SOCKET HEAD BOLT M4X10	3	PC.
029	2	922127-5	* HEX SOCKET HEAD BOLT M4X16	3	PC.
030		144330-0	DRIVER GUIDE COMPLETE	1	PC.
031		135895-3	MAGAZINE ASSY	1	PC.
031	INC.		Item No. 32-38,40,42-44,47-55,57,100		
032		347138-3	PUSHER	1	PC.
033		310176-8	* STOPPER	1	PC.
034		233018-8	COMPRESSION SPRING 3	1	PC.
035		232362-0	LEAF SPRING	1	PC.
036		346239-4	NAIL STOPPER	4	PC.
037		232367-0	COMPRESSION SPRING 3	4	PC.
038	2	458195-7	* MAGAZINE	1	PC.
039		911133-5	PAN HEAD SCREW M4X18	2	PC.

Item No	Type	Part No	Description	Qty	Unit
040		347137-5	SPACER	1	PC.
042		144335-0	LOWER RAIL COMPLETE	1	PC.
043		457382-5	NAIL GUIDE HOLDER	1	PC.
044		144388-9	UPPER RAIL COMPLETE	1	PC.
044	INC.	812C62-2	CAUTION LABEL	1	PC.
044	INC.	931102-0	HEX NUT M4	1	PC.
047		457387-5	SPRING COVER	1	PC.
048		911113-1	PAN HEAD SCREW M4X10 WITH WASHER	1	PC.
049		457383-3	SHOULDER PIN 5-6	1	PC.
050		232366-2	COMPRESSION SPRING 5	1	PC.
051		266177-3	HEX SOCKET HEAD BOLT M3X10	2	PC.
052		457388-3	LEVER	1	PC.
053		233117-6	COMPRESSION SPRING 6	1	PC.
054		256793-9	PIN 3	1	PC.
055		457381-7	SLIDE DOOR CAP	1	PC.
056		268158-3	PIN 5	1	PC.
057		262054-7	URETHANE RING 3	1	PC.
058		347139-1	LOCK ARM	1	PC.
059		629253-8	DC MOTOR	1	PC.
060		267053-4	FLAT WASHER 12	1	PC.
061		227166-3	INTERNAL GEAR 69	1	PC.
063		221961-3	SPUR GEAR 27	3	PC.
064		154973-0	SPUR GEAR 7 COMPLETE	1	PC.
065		345773-1	ANTI BACK PLATE	1	PC.
066	2	140U73-8	SPUR GEAR 55 COMPLETE	1	PC.
067		214060-8	PLANE BEARING 10	1	PC.
068		620507-6	LED CIRCUIT	1	PC.
069		632J90-1	CONTROLLER UNIT	1	PC.
070		456799-9	TRIGGER LOCK	1	PC.
071	2	632M82-8	SWITCH UNIT	1	PC.
072		632G60-2	SWITCH UNIT	1	PC.
073		632K06-2	SWITCH UNIT	1	PC.
078		232370-1	COMPRESSION SPRING 5	1	PC.
079		457386-7	TRIGGER	1	PC.
080		347142-2	GEAR PLATE	1	PC.
092		143778-3	INDICATOR PANEL COMPLETE	1	PC.
093		266130-9	TAPPING SCREW BIND PT M3X16	1	PC.
094		457385-9	HOUSING R COVER	1	PC.
096		852X49-8	NAME PLATE F/DPT353	1	PC.

Item No	Type	Part No	Description	Qty	Unit
097		911173-3	PAN HEAD SCREW M4X45	1	PC.
098		266130-9	TAPPING SCREW BIND PT M3X16	8	PC.
100		233459-8	COMPRESSION SPRING 3	1	PC.
101		232365-4	COMPRESSION SPRING 7	1	PC.
102		961017-7	STOP RING E-3	1	PC.
103		347136-7	CONTACT ARM	1	PC.
104		326905-9	ADJUSTER SHAFT	1	PC.
105		216031-1	STEEL BALL 2.3	1	PC.
106		234254-9	COMPRESSION SPRING 2	1	PC.
107		457378-6	ADJUSTER	1	PC.
108		310778-0	ARM	1	PC.
109		961017-7	STOP RING E-3	1	PC.
110		922107-1	HEX SOCKET HEAD BOLT M4X8	2	PC.
111		144329-5	CENTER PLATE COMPLETE	1	PC.
112		310777-2	CONTACT TOP COVER	1	PC.
113	3	313421-0	COUNTER WEIGHT A	2	PC.
114		251566-5	HSH BOLT M4X6 WITH WASHER	2	PC.
115		347146-4	PINION GUIDE	2	PC.
116	2	413330-4	COUNTER WEIGHT HOLDER, BLUE	4	PC.
119		326902-5	PINION SHAFT	2	PC.
120	1	424953-3	DUMPER RUBBER (No longer used with Type2)	8	PC.
121	1	922102-1	HEX SOCKET HEAD BOLT M4X6	4	PC.
121	2	266199-3	HEX SOCKET HEAD BOLT M4X6	4	PC.
122		347145-6	GUIDE RAIL R	1	PC.
123		347144-8	GUIDE RAIL L	1	PC.
124		310781-1	COUNTER WEIGHT B	2	PC.
125	1	347147-2	COUNTER STOPPER	1	PC.
125	2	347672-3	COUNTER STOPPER	1	PC.
126		424954-1	COUNTER CUSHION	2	PC.
127		326904-1	WEIGHT	2	PC.
128		232363-8	COMPRESSION SPRING 7	2	PC.
129	1	326901-7	GUIDE PIPE	2	PC.
129	2	327550-3	GUIDE PIPE	2	PC.
130		135857-1	CONTACT ARM ASSY	1	PC.
130	INC.		Item No. 102-109		
131	3	136104-3	SPUR GEAR ASSEMBLY	2	PC.
132		457809-5	SWITCH GUARD	1	PC.
133		922112-8	* HEX SOCKET HEAD BOLT M4X10 (Added)	1	PC.
200		251314-2	+TH SCREW M4X12 F/HOOK	1	PC.

Item No	Type	Part No	Description	Qty	Unit
A03		346449-3	HOOK F/14.4V, 18V LI-ION BTTRY	1	PC.
A04	2	422372-7	NOSE ADAPTER, RED	2	PC.
A05		783201-2	HEX WRENCH 3	1	PC.
A06		-----	18V LI-ION BATTERY		
A07		-----	BATTERY CHARGER		
A08		-----	LI-ION BATTERY ACCESSORIES		
A09		197211-7	INTERLOCKING TOOL CASE M	1	PC.
A09	INC.	453974-8	LOCKING LATCH	4	PC.
A10		T-02571	FOAM INSERT F/INTERLOCK CASE	2	PC.
A11		422240-4	NOSE ADAPTER	1	PC.
B01		127762-6	CENTER PLATE ASSEMBLY	1	PC.
B01	INC.		Item No. 110 - 112		

SERVICE CHANGES

1. Changes on Magazine

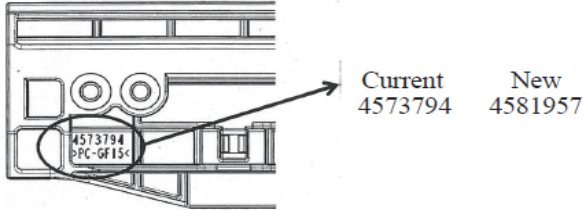
(TI#B8741)

Item No.	Description	Type 1	Type 2
33	STOPPER		310176-8
38	MAGAZINE	457379-4	458195-7

****When you replace Item No. 33 Stopper**

If the magazine indication is 4573794, replace the stopper and the magazine with new ones (Type2)
 If the magazine indication is 4581957(Implementantion: from serial No. 4957),
 you do not necessarily replace the magazine with a new one (Type2).

Note: Check the indication and follow the steps shown below.



2. Changes on Front Cover and Upper Plate

(T/I#C9990)

Item No.	Description	Type 1	Type 2
8	FRONT COVER	457384-0	459308-3
10	UPPER PLATE	345704-0	347528-0

Above parts are interchangeable as a set.

3. Changes on Counter Stopper, Bottom Plate and Guide Pipe

(TI#D1195)

Item No.	Description	Type 1	Type 2
125	COUNTER STOPPER	347147-2	347672-3
014	BOTTOM PLATE	347143-0	347671-5
129	GUIDE PIPE	326901-7	327550-3

Above parts are completely interchangeable as a set.

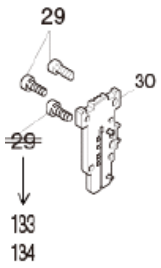
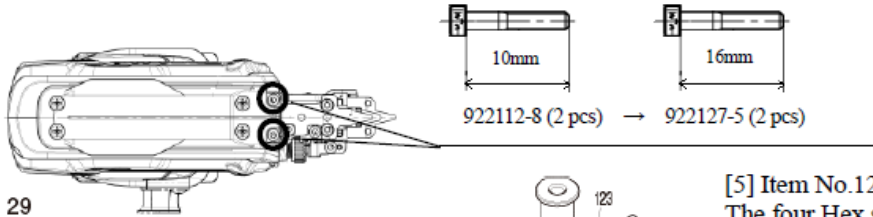
4. Changes on Hex Socket Head Bolt

(TI#DG869)

Item No.	Description	Type 1	Type 2
29	HEX SOCKET HEAD BOLT M4X10	922112-8	-----
	HEX SOCKET HEAD BOLT M4X16	-----	922127-5
133	HEX SOCKET HEAD BOLT M4X10	-----	922112-8

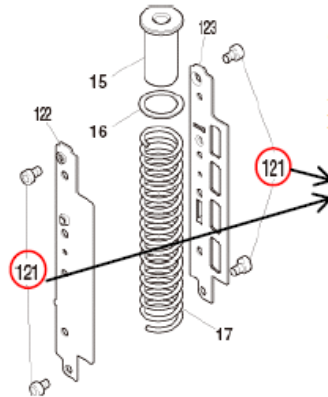
Above parts are completely interchangeable as a set.

[3] Item No.029: The length of two out of three Hex socket head bolts which are tightened from outside of Rail will be changed from 10mm to 16mm.



[4] Item No.029:
The item No. of the one out of three Hex socket head bolt which does not tighten Rail will be changed.

Item No.029→133 (DPT353, XTP02)
Item No.029→134 (PT354D, TP03)



[5] Item No.121:
The four Hex socket head bolts M4x6 which fasten the left and right Guide rails to Bottom plate will be changed from without Adhesive to with Adhesive.

